

HermanMiller
Lino



At the nexus of comfort and value



Lino™
Designed by Sam Hecht and Kim Colin

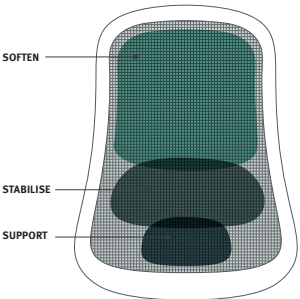
Lino brings scientifically backed comfort and a wide range of aesthetic options to your workplace or home. Charged with designing a high-performance work chair at an exceptional value, award-winning designers Hecht and Colin found inspiration in constraint. Thanks to their design prowess

and our ergonomic expertise – including our patented PostureFit technology – Lino joins our portfolio of high-performance work chairs. At Herman Miller, we think everyone should enjoy good design and comfort while they work, and Lino helps make that possibility a reality.



Performance

Leaning on more than 50 years of Herman Miller’s industry-leading research and design, Lino holds the same DNA as the rest of our performance work chairs, offering each person balanced movement and dynamic fit. Its contoured seat works together with its high-performance suspension to give you total spinal support, and the breathable suspension features integrated lumbar support thanks to a composite of different thread tensions.



Lino’s proprietary Duo suspension material features three breathable zones of varying tension to provide thoracic, lumbar, and sacral support.



Optional, adjustable back support with PostureFit is available for added comfort in the sacral and lumbar regions.



Customise your Lino Chair by choosing between a Black or Mineral frame, six different suspension colours, and a large variety of upholstery options. For the base, choose a colour that matches the frame or, for a sleeker look, turn to polished aluminium.

Design

Lino marries the design expertise of Sam Hecht and Kim Colin to the comfort you'd expect from a Herman Miller task chair. It has been made to our highest quality standards and rigorously engineered, tooled, and tested. That attention to detail is also apparent in the chair's minimal environmental impact. Lino is backed by our 12-year, 3-shift warranty.

About Sam Hecht and Kim Colin

Designers Sam Hecht and Kim Colin of London-based Industrial Facility create work that balances the need to live a full life with the desire to keep things simple. British-born Hecht's contemplative approach and attention to detail complements California-born Colin's architectural sensibility; together they design furniture and products that relate to the landscapes where they are used.

Colin says, "We strive for simplicity of use that is not to the detriment of good functionality." Hecht adds, "What comes out of it is a kind of equilibrium where products are relevant and lasting."



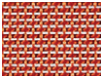
Sam Hecht and Kim Colin

Materials

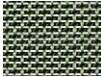
Lino Chairs are available in a variety of textiles and base finishes.
Please speak to your Herman Miller representative for the most current textiles and materials available.

Lino Chairs

Suspension Back
Duo



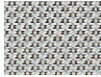
Price Band 1
Poppy
4RM02



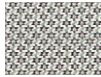
Price Band 1
Green Leaf
4RM03



Price Band 1
Jade
4RM04



Price Band 1
Mineral
4RM01



Price Band 1
Shadow
4RM05

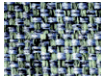


Price Band 1
Graphite
4RM06

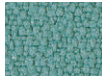
Upholstered Seat
Textile



Price Band 0
*Phoenix
70



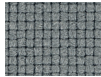
Price Band 1
*Rivet
1RV



Price Band 1
Xtreme
98



Price Band 2
Field 2
1FD



Price Band 2
Go Uni
121



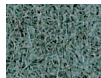
Price Band 2
Medley
1HA



Price Band 2
*Unity / Nexus
1D



Price Band 3
Aquarius
7A



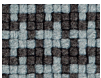
Price Band 3
Blazer
Z1A



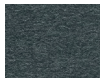
Price Band 3
Canvas 2
ZC5



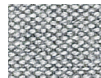
Price Band 3
Go Check
123



Price Band 3
Go Couture
122



Price Band 3
Hero
ZH1



Price Band 3
Remix 2
117



Price Band 4
Capture
124



Price Band 6
Steelcut Trio 3
116

Frame/Base
Finish



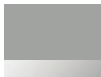
Black Frame
Black Base
BK



Mineral Frame
Mineral Base
VPR



Black Frame
Polished Aluminium
68



Mineral Frame
Polished Aluminium
PAM




Mineral Frame
Black Base
BKV

*Phoenix, Rivet and Unity are not certified for domestic use in the UK.

Family Work Chair Stool		Back Support Lumbar Support Passive Sacral Support Adjustable Sacral Lumbar Support with PostureFit		Standard Standard Optional
Overview Maximum User Weight		159 kg	Tilt Options Semi-synchronous with tilt limiter Synchronous with tilt limiter Synchronous with tilt limiter and seat angle	
Seat Height Standard Cylinder		425 – 527mm	Arm Options No Arms Fixed Arms Height-Adjustable Arms Fully Adjustable Arms	
Seat Depth Fixed Adjustable*		400mm 384 – 454mm	*work chair only	

For more information, please visit hermanmiller.com or call +44 1225 794000.

Herman Miller and  are among the registered trademarks of Herman Miller, Inc.
Lino Chair by Herman Miller and Auto-Harmonic are trademarks of Herman Miller, Inc., and its owned subsidiaries.
All other trademarks are the property of their respective owners.

Printed in the UK. Please recycle.
© 2020 Herman Miller, Inc., Zeeland, Michigan PB2363
All rights reserved.